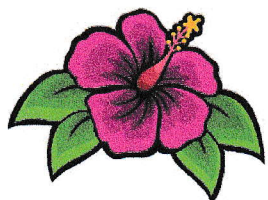
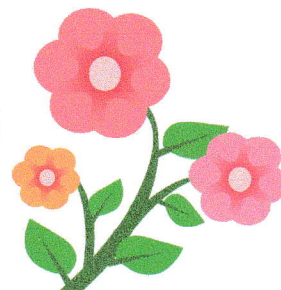


# The Entrance Women's Bowling Club

Invites you to play in :-



## "SPRINGTIME 2 bowl TRIPLES"



**Monday 23rd September, 2019**



**CREIGHTONS**

Funeral Service

Proudly sponsored by Creightons Funeral Services and  
The Entrance Women's Bowling Club

**Total Prize Money \$1,500**

Prize money to be allocated to the 4 Best Performed Teams,  
decided on Wins & Margins.

Dress is B.A. Approved Attire

**Programme:** 3 Games, 15 ends on Monday

***Play to commence at 8.50 a.m.***

Entry Fee of \$60 per team to accompany entry form.

Price includes Morning Tea 8.30 a.m.

and Light Lunch supplied.

**Closing Date 16th Sep. or when filled.**

**No Refunds after closing date.**

We will accept Direct Deposit  
with phoned in or emailed entry  
commonwealth bsb: 062606 a/c 00540748

Address entries to: The Secretary The Entrance Women's Bowling Club,  
P.O. Box 57, THE ENTRANCE NSW 2261  
Maureen 43 883 851 0427 638 291  
theentrancewbc@gmail.com

### "Springtime Triples" 2019



**CREIGHTONS**

Funeral Service

Names .....

Lead .....

Second .....

Skip .....

Club .....

Contact Ph No .....

**\*\* any special food requirements for medical reason only, must  
let the secretary know on your entry form prior to the event.**

# The Entrance Women's Bowling Club

## *Pink Ribbon Cup*



To raise funds for research and support  
for breast cancer patients



**Monday 16th September, 2019**

### **SINGLE TEAM ENTRY**

Perpetual Trophy to be awarded to the club  
nominated sides only

We will accept Direct Deposit  
with phoned in or emailed entry  
commonwealth bsb: 062606 a/c 00540748

### **Programme**

**Dress: Pink Attire**

**2 games of 12 Ends before Lunch**

**Trial Ends 9am, play to commence at 9.20 am**

**Entry Fee of of \$50 per team to accompany entry form**

**Price includes Morning Tea at 8.30am and a Light Lunch**

Address entries to : Attn: Bowls Secretary,  
The Entrance Women's Bowling Club,  
P.O. Box 57,  
THE ENTRANCE NSW 2261

PH: Maureen 43 883 851  
theentrancewbc@gmail.com

**Closing Date 9th September, 2019  
or when filled**

**No Refunds after closing date.**



### **Pink Ribbon Cup 2019 Single Team Entry**

Any "special food requirement" for  
medical reason only, **must** let the  
secretary know on your entry form  
**prior** to event.

Lead .....  
2nd .....  
3rd .....  
Skip .....

Club ..... Contact Ph. No. ....



# The Entrance Women's Bowling Club

## *Pink Ribbon Cup*



To raise funds for research and support  
for breast cancer patients



**Monday 16th September, 2019**

### CLUB TEAMS ENTRY

Two (2) teams of four (4) per Club  
Perpetual Trophy to be awarded to the club  
with best combined "Wins plus Margins"

We will accept Direct Deposit  
with phoned in or emailed entry  
commonwealth bsb: 062606 a/c 00540748

### Programme

Dress: Pink Attire

2 games of 12 Ends before Lunch

Trial Ends 9am, play to commence at 9.20 am

Entry Fee of of \$100 per club to accompany entry form

Price includes Morning Tea at 8.30am and a Light Lunch

Address entries to : Attn: Bowls Secretary,  
The Entrance Women's Bowling Club,  
P.O. Box 57,  
THE ENTRANCE NSW 2261

PH: Maureen 43 883 851  
theentrancewbc@gmail.com

**Closing Date 9th September, 2019**

**or when filled**

**No Refunds after closing date.**



**Pink Ribbon Cup 2019**  
**Club Entry Nominated side**

Any "special food requirements" for  
medical reason only, **must** let the secretary  
know on entry form **prior** to event.

Lead .....	Lead .....
2nd .....	2nd .....
3rd .....	3rd .....
Skip .....	Skip .....
Club .....	Contact Ph. No. ....